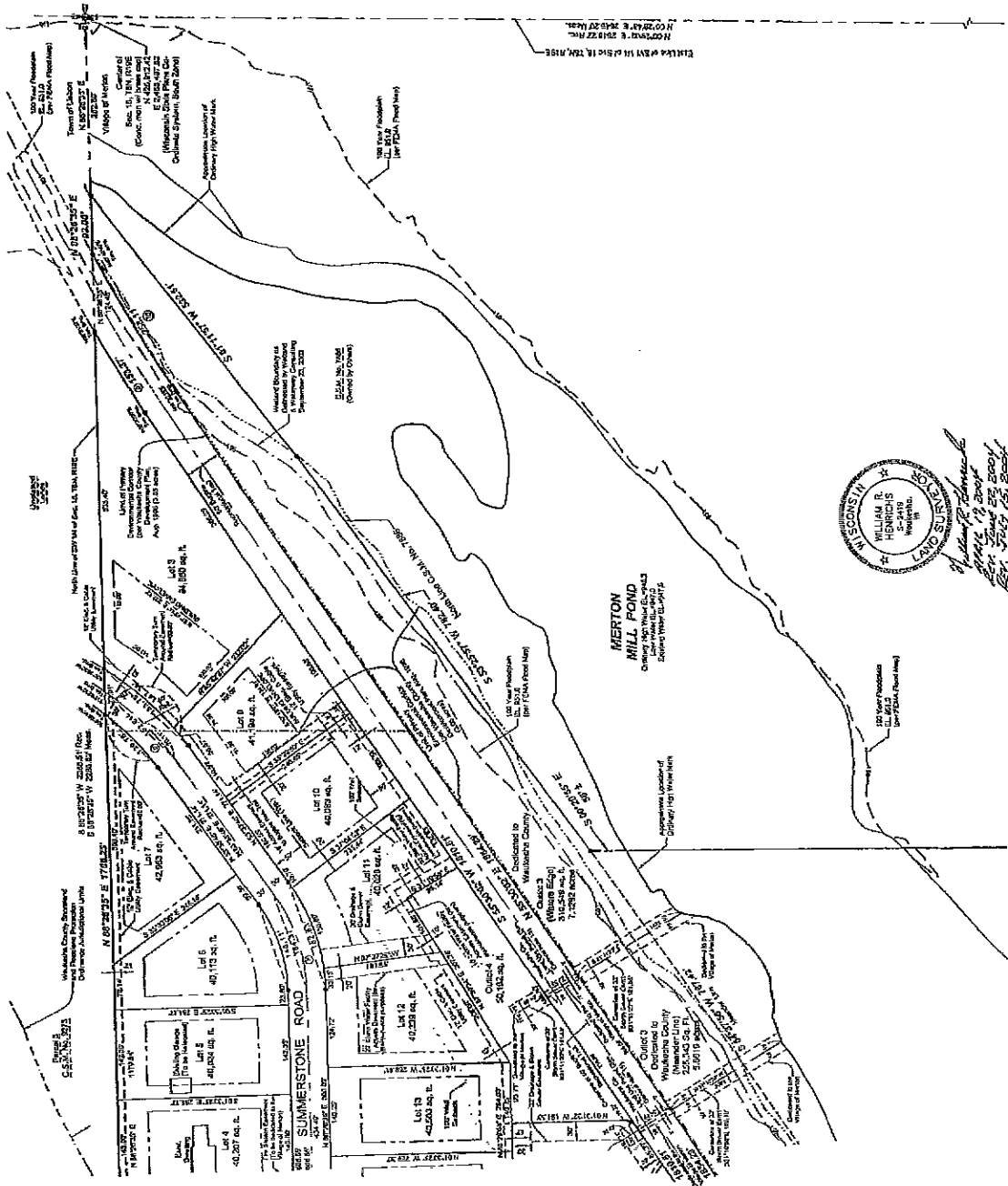




# SUMMERSTONE

BEING A PART OF THE SOUTHEAST 1/4 OF SECTION 13, TOWNSHIP 8 NORTH, RANGE 18 EAST AND PART OF THE SOUTHWEST 1/4 OF SECTION 18, TOWNSHIP 8 NORTH, RANGE 19 EAST, IN THE VILLAGE OF MERTON, WAUKESHA COUNTY, WISCONSIN



*William R. Henrichs*  
 State of Wisconsin  
 No. 10000  
 July 15, 2004

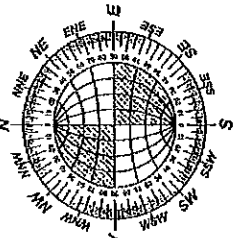
**MAIN CURVE TABLE**

CURVE	RADIUS	LENGTH	CHORD	CENTRAL ANGLE	DEFLECTION ANGLE	CHORD BEARING
1A	100.00'	44.12'	44.12'	18.18°	71.82°	N81°41'54.0"E
1B	100.00'	66.78'	66.78'	27.27°	72.73°	N72°43'42.0"E
2A	200.00'	88.36'	88.36'	24.84°	75.16°	N81°42'04.2"E
2B	200.00'	51.07'	51.07'	15.52°	84.48°	S89°21'11.5"W
3A	100.00'	45.54'	45.54'	15.12°	84.88°	S89°21'11.5"W
3B	100.00'	28.78'	28.78'	9.58°	90.42°	S89°21'11.5"W
4	15.00'	28.78'	28.78'	15.12°	84.88°	S89°21'11.5"W
5	15.00'	28.78'	28.78'	15.12°	84.88°	S89°21'11.5"W
6	15.00'	28.78'	28.78'	15.12°	84.88°	S89°21'11.5"W
7	15.00'	28.78'	28.78'	15.12°	84.88°	S89°21'11.5"W
8	15.00'	28.78'	28.78'	15.12°	84.88°	S89°21'11.5"W
9	15.00'	28.78'	28.78'	15.12°	84.88°	S89°21'11.5"W
10	15.00'	28.78'	28.78'	15.12°	84.88°	S89°21'11.5"W
11	15.00'	28.78'	28.78'	15.12°	84.88°	S89°21'11.5"W
12	15.00'	28.78'	28.78'	15.12°	84.88°	S89°21'11.5"W
13	15.00'	28.78'	28.78'	15.12°	84.88°	S89°21'11.5"W
14	15.00'	28.78'	28.78'	15.12°	84.88°	S89°21'11.5"W
15	15.00'	28.78'	28.78'	15.12°	84.88°	S89°21'11.5"W
16	15.00'	28.78'	28.78'	15.12°	84.88°	S89°21'11.5"W
17	15.00'	28.78'	28.78'	15.12°	84.88°	S89°21'11.5"W
18	15.00'	28.78'	28.78'	15.12°	84.88°	S89°21'11.5"W
19	15.00'	28.78'	28.78'	15.12°	84.88°	S89°21'11.5"W
20	15.00'	28.78'	28.78'	15.12°	84.88°	S89°21'11.5"W
21	15.00'	28.78'	28.78'	15.12°	84.88°	S89°21'11.5"W
22	15.00'	28.78'	28.78'	15.12°	84.88°	S89°21'11.5"W
23	15.00'	28.78'	28.78'	15.12°	84.88°	S89°21'11.5"W
24	15.00'	28.78'	28.78'	15.12°	84.88°	S89°21'11.5"W
25	15.00'	28.78'	28.78'	15.12°	84.88°	S89°21'11.5"W
26	15.00'	28.78'	28.78'	15.12°	84.88°	S89°21'11.5"W
27	15.00'	28.78'	28.78'	15.12°	84.88°	S89°21'11.5"W
28	15.00'	28.78'	28.78'	15.12°	84.88°	S89°21'11.5"W
29	15.00'	28.78'	28.78'	15.12°	84.88°	S89°21'11.5"W
30	15.00'	28.78'	28.78'	15.12°	84.88°	S89°21'11.5"W
31	15.00'	28.78'	28.78'	15.12°	84.88°	S89°21'11.5"W
32	15.00'	28.78'	28.78'	15.12°	84.88°	S89°21'11.5"W
33	15.00'	28.78'	28.78'	15.12°	84.88°	S89°21'11.5"W
34	15.00'	28.78'	28.78'	15.12°	84.88°	S89°21'11.5"W
35	15.00'	28.78'	28.78'	15.12°	84.88°	S89°21'11.5"W
36	15.00'	28.78'	28.78'	15.12°	84.88°	S89°21'11.5"W
37	15.00'	28.78'	28.78'	15.12°	84.88°	S89°21'11.5"W
38	15.00'	28.78'	28.78'	15.12°	84.88°	S89°21'11.5"W
39	15.00'	28.78'	28.78'	15.12°	84.88°	S89°21'11.5"W
40	15.00'	28.78'	28.78'	15.12°	84.88°	S89°21'11.5"W
41	15.00'	28.78'	28.78'	15.12°	84.88°	S89°21'11.5"W
42	15.00'	28.78'	28.78'	15.12°	84.88°	S89°21'11.5"W
43	15.00'	28.78'	28.78'	15.12°	84.88°	S89°21'11.5"W
44	15.00'	28.78'	28.78'	15.12°	84.88°	S89°21'11.5"W
45	15.00'	28.78'	28.78'	15.12°	84.88°	S89°21'11.5"W
46	15.00'	28.78'	28.78'	15.12°	84.88°	S89°21'11.5"W
47	15.00'	28.78'	28.78'	15.12°	84.88°	S89°21'11.5"W
48	15.00'	28.78'	28.78'	15.12°	84.88°	S89°21'11.5"W
49	15.00'	28.78'	28.78'	15.12°	84.88°	S89°21'11.5"W
50	15.00'	28.78'	28.78'	15.12°	84.88°	S89°21'11.5"W

**LOT CURVE TABLE**

LOT	RADIUS	LENGTH	CHORD	CENTRAL ANGLE	DEFLECTION ANGLE	CHORD BEARING
1	250.00'	107.20'	104.74'	15.31°	84.69°	S84°41'04.0"E
2	250.00'	107.20'	104.74'	15.31°	84.69°	S84°41'04.0"E
3	250.00'	107.20'	104.74'	15.31°	84.69°	S84°41'04.0"E
4	250.00'	107.20'	104.74'	15.31°	84.69°	S84°41'04.0"E
5	250.00'	107.20'	104.74'	15.31°	84.69°	S84°41'04.0"E
6	250.00'	107.20'	104.74'	15.31°	84.69°	S84°41'04.0"E
7	250.00'	107.20'	104.74'	15.31°	84.69°	S84°41'04.0"E
8	250.00'	107.20'	104.74'	15.31°	84.69°	S84°41'04.0"E
9	250.00'	107.20'	104.74'	15.31°	84.69°	S84°41'04.0"E
10	250.00'	107.20'	104.74'	15.31°	84.69°	S84°41'04.0"E
11	250.00'	107.20'	104.74'	15.31°	84.69°	S84°41'04.0"E
12	250.00'	107.20'	104.74'	15.31°	84.69°	S84°41'04.0"E
13	250.00'	107.20'	104.74'	15.31°	84.69°	S84°41'04.0"E
14	250.00'	107.20'	104.74'	15.31°	84.69°	S84°41'04.0"E
15	250.00'	107.20'	104.74'	15.31°	84.69°	S84°41'04.0"E
16	250.00'	107.20'	104.74'	15.31°	84.69°	S84°41'04.0"E
17	250.00'	107.20'	104.74'	15.31°	84.69°	S84°41'04.0"E
18	250.00'	107.20'	104.74'	15.31°	84.69°	S84°41'04.0"E
19	250.00'	107.20'	104.74'	15.31°	84.69°	S84°41'04.0"E
20	250.00'	107.20'	104.74'	15.31°	84.69°	S84°41'04.0"E
21	250.00'	107.20'	104.74'	15.31°	84.69°	S84°41'04.0"E
22	250.00'	107.20'	104.74'	15.31°	84.69°	S84°41'04.0"E
23	250.00'	107.20'	104.74'	15.31°	84.69°	S84°41'04.0"E
24	250.00'	107.20'	104.74'	15.31°	84.69°	S84°41'04.0"E
25	250.00'	107.20'	104.74'	15.31°	84.69°	S84°41'04.0"E
26	250.00'	107.20'	104.74'	15.31°	84.69°	S84°41'04.0"E
27	250.00'	107.20'	104.74'	15.31°	84.69°	S84°41'04.0"E
28	250.00'	107.20'	104.74'	15.31°	84.69°	S84°41'04.0"E
29	250.00'	107.20'	104.74'	15.31°	84.69°	S84°41'04.0"E
30	250.00'	107.20'	104.74'	15.31°	84.69°	S84°41'04.0"E
31	250.00'	107.20'	104.74'	15.31°	84.69°	S84°41'04.0"E
32	250.00'	107.20'	104.74'	15.31°	84.69°	S84°41'04.0"E
33	250.00'	107.20'	104.74'	15.31°	84.69°	S84°41'04.0"E
34	250.00'	107.20'	104.74'	15.31°	84.69°	S84°41'04.0"E
35	250.00'	107.20'	104.74'	15.31°	84.69°	S84°41'04.0"E
36	250.00'	107.20'	104.74'	15.31°	84.69°	S84°41'04.0"E
37	250.00'	107.20'	104.74'	15.31°	84.69°	S84°41'04.0"E
38	250.00'	107.20'	104.74'	15.31°	84.69°	S84°41'04.0"E
39	250.00'	107.20'	104.74'	15.31°	84.69°	S84°41'04.0"E
40	250.00'	107.20'	104.74'	15.31°	84.69°	S84°41'04.0"E
41	250.00'	107.20'	104.74'	15.31°	84.69°	S84°41'04.0"E
42	250.00'	107.20'	104.74'	15.31°	84.69°	S84°41'04.0"E
43	250.00'	107.20'	104.74'	15.31°	84.69°	S84°41'04.0"E
44	250.00'	107.20'	104.74'	15.31°	84.69°	S84°41'04.0"E
45	250.00'	107.20'	104.74'	15.31°	84.69°	S84°41'04.0"E
46	250.00'	107.20'	104.74'	15.31°	84.69°	S84°41'04.0"E
47	250.00'	107.20'	104.74'	15.31°	84.69°	S84°41'04.0"E
48	250.00'	107.20'	104.74'	15.31°	84.69°	S84°41'04.0"E
49	250.00'	107.20'	104.74'	15.31°	84.69°	S84°41'04.0"E
50	250.00'	107.20'	104.74'	15.31°	84.69°	S84°41'04.0"E

Beating refers to Grid North of the Wisconsin State Plane Coordinate System, State Zone per N.A.S.D. 22. The North line of the Southeast 1/4 of Section 13, Township 8 North, Range 18 East has a reference bearing of N 89° 21' 11.5" W.



GRAPHIC SCALE  
 1 inch = 100 feet

There are no adjustments to this file with respect to Sects. 25, 15, 25, 18, 25, 20 and 25, 21 (1) and (2), W1/4, Secs. as provided by 2, 25, 12, W1/4, Secs.  
 Certified July 30, 2004  
*William R. Henrichs*  
 State of Wisconsin  
 No. 10000

Map prepared by: William R. Henrichs, PLS  
 LANDSCAPE SURVEY AND ENGINEERING, INC.  
 2012 Sun Prairie, WI 53591  
 PLS Registration No. 1010100007  
 Department of Administration  
 Job Number: 030100  
 Signed: April 19, 2004  
 Revised: June 22, 2004  
 Rechecked: July 15, 2004  
**SHEET 2 OF 3**

